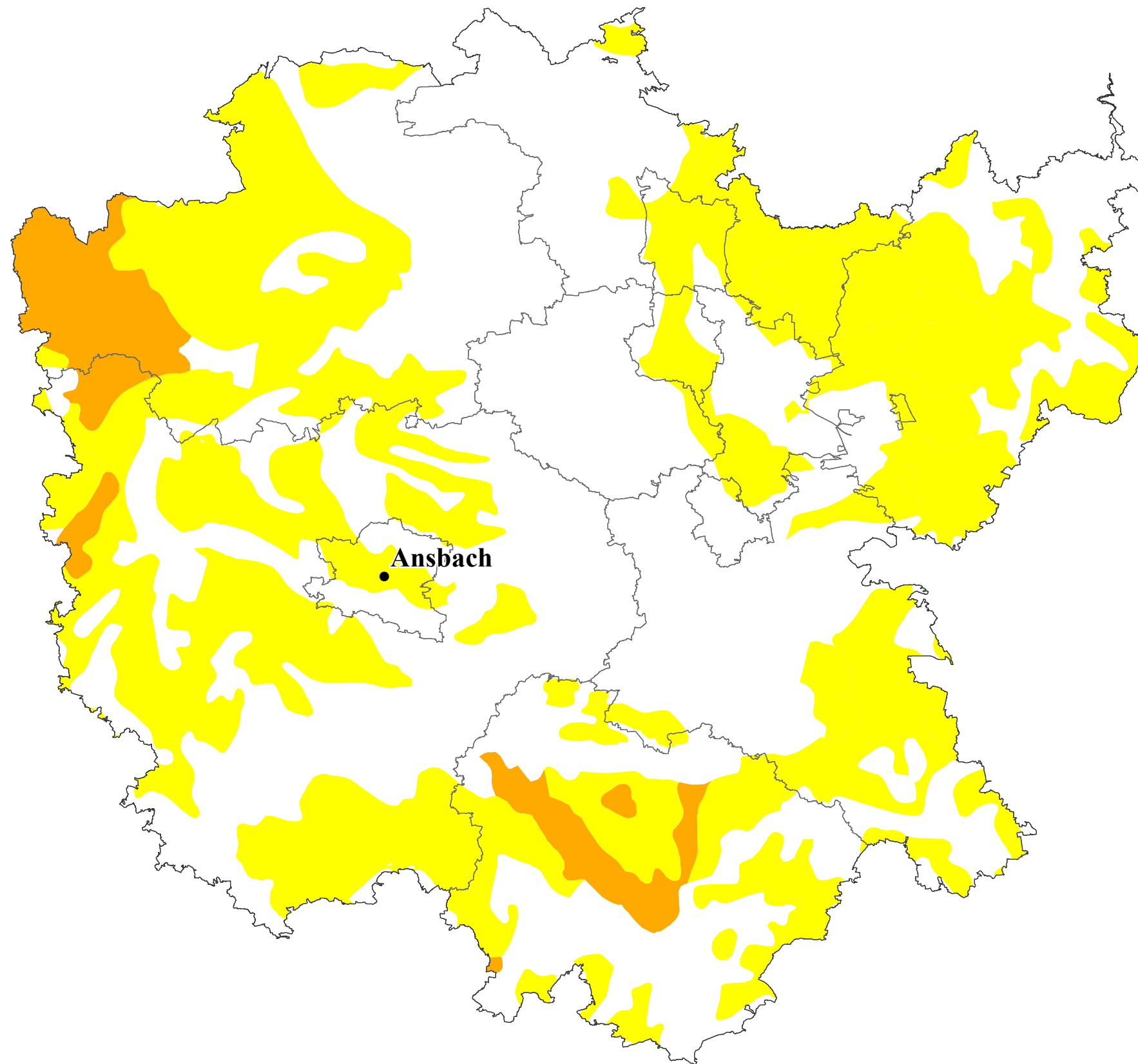







Eignung der Böden für den Anbau von Sojabohnen

Mittelfranken



Ansbach

-  geeignet
-  bedingt geeignet
-  Landkreis
-  Regierungsbezirk
-  Regierungssitz

0 4 8 16 24 32
Kilometer
1:475000

Datengrundlage:
Geobasisdaten:
© Bayerische Vermessungsverwaltung
(www.geodaten.bayern.de)
DWD, Agrarmeteorologie Weihenstephan
BGR: Bük 1.000, 1995
Eigene Berechnungen

