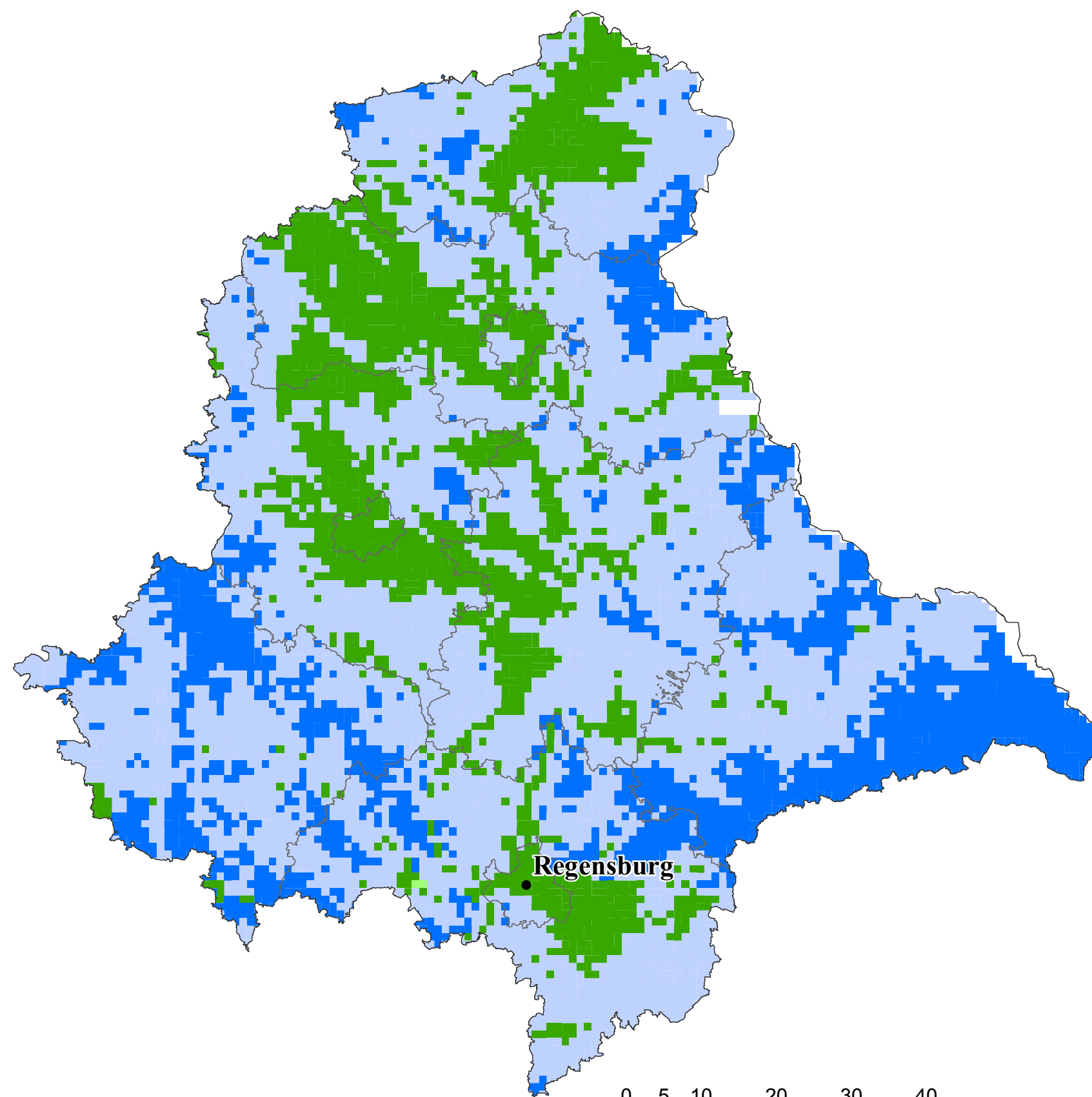
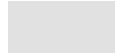







Mittlere Niederschlagssumme 01.06. - 31.08.¹⁾

Oberpfalz



0 5 10 20 30 40
Kilometer
1:650000

-  < 165 mm
-  165 bis < 200 mm
-  200 bis < 235 mm
-  235 bis < 270 mm
-  ≥ 270 mm

-  Landkreis
-  Regierungsbezirk
-  Regierungssitz

1) 1981 - 2010

Datengrundlage:
Geobasisdaten:
© Bayerische Vermessungsverwaltung
(www.geodaten.bayern.de)
DWD, Agrarmeteorologie Weihenstephan
BGR: Bük 1.000, 1995
Eigene Berechnungen

