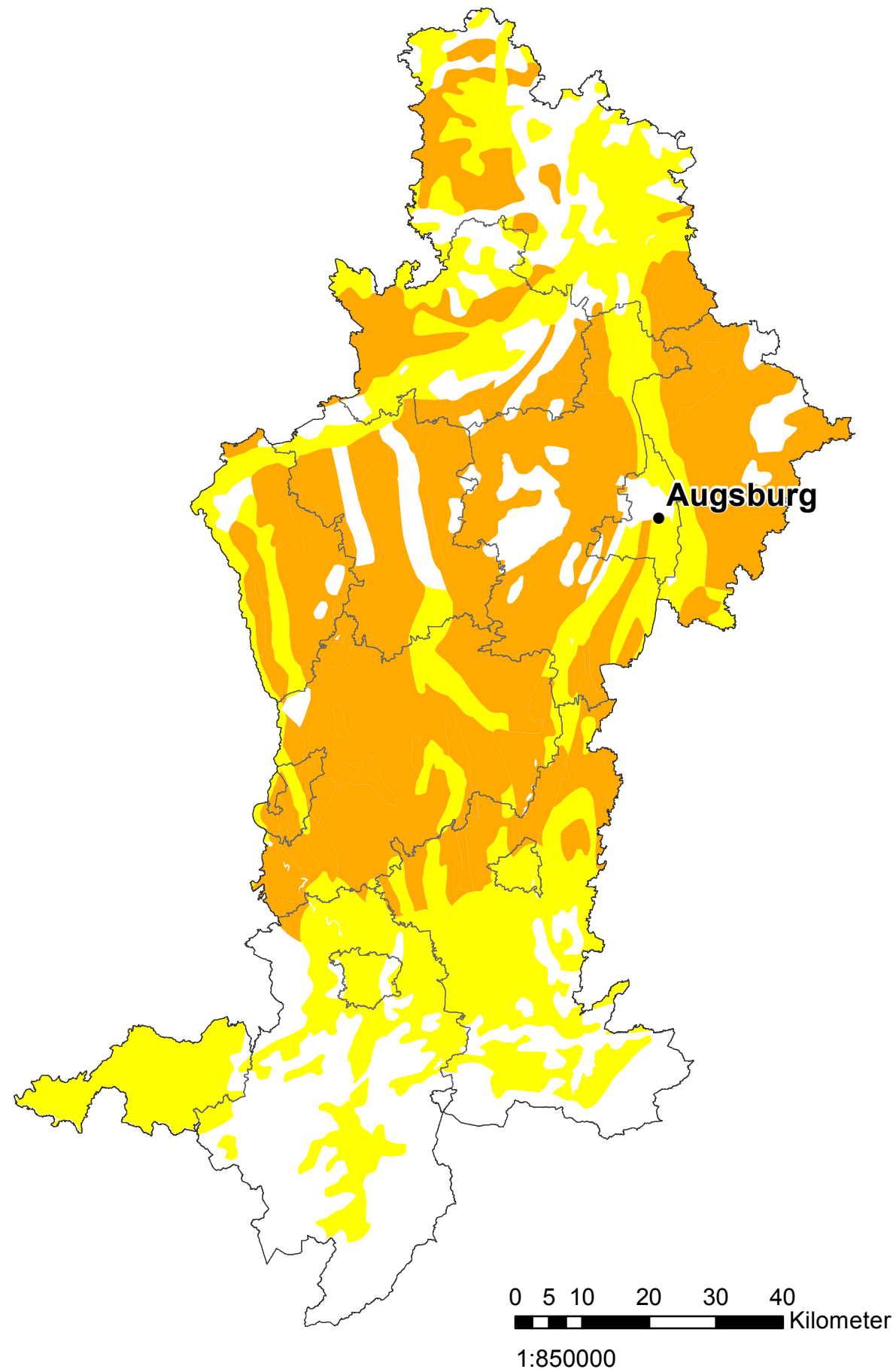







# Eignung der Böden für den Anbau von Sojabohnen

Schwaben



-  geeignet
-  bedingt geeignet
-  Landkreis
-  Regierungsbezirk
-  Regierungssitz

Datengrundlage:  
Geobasisdaten:  
© Bayerische Vermessungsverwaltung  
([www.geodaten.bayern.de](http://www.geodaten.bayern.de))  
DWD, Agrarmeteorologie Weihenstephan  
BGR: Bük 1.000, 1995  
Eigene Berechnungen

