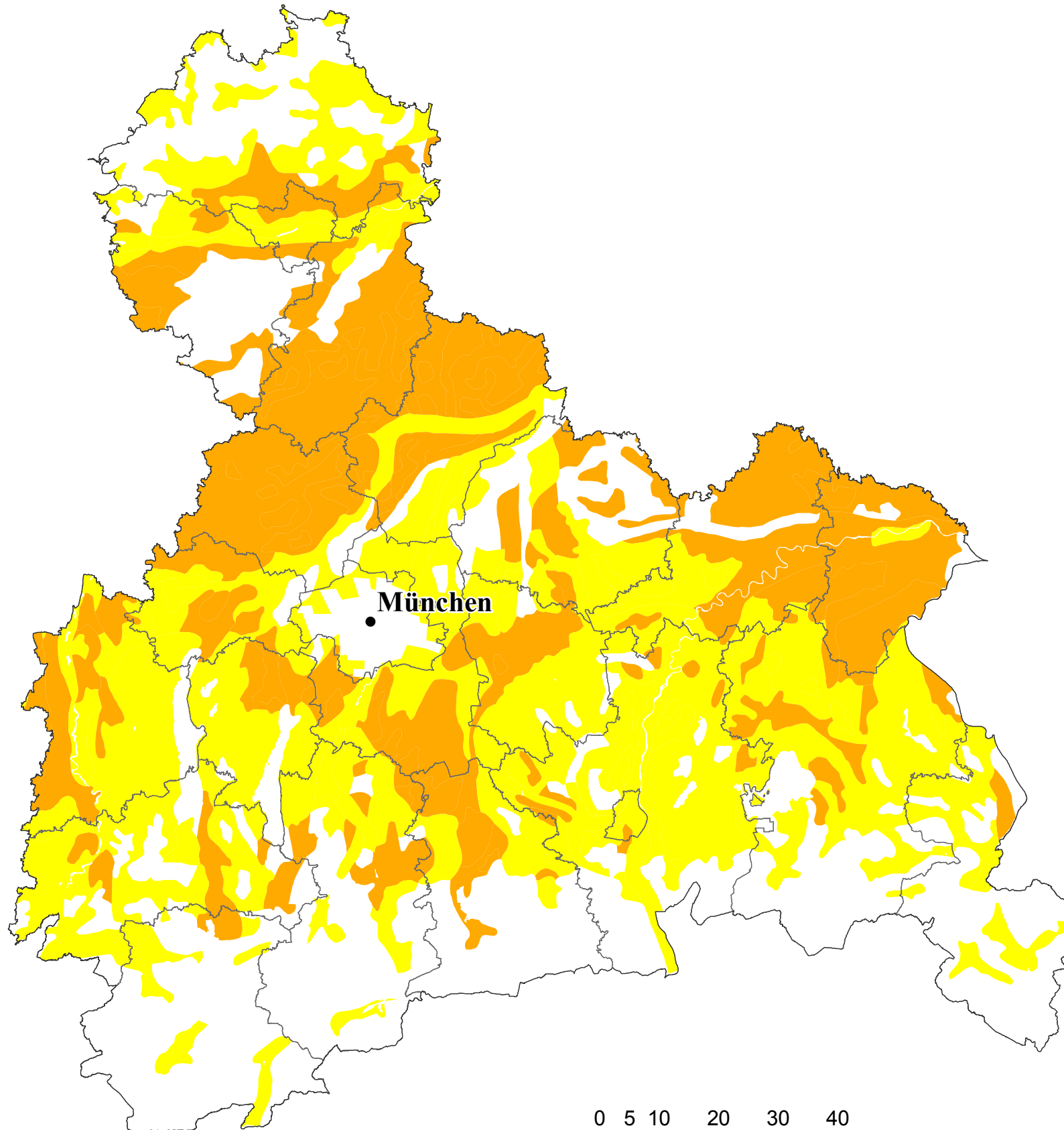







Eignung der Böden für den Anbau von Sojabohnen

Oberbayern



-  geeignet
-  bedingt geeignet
-  Landkreis
-  Regierungsbezirk
-  Regierungssitz

0 5 10 20 30 40
Kilometer
1:850000

Datengrundlage:
Geobasisdaten:
© Bayerische Vermessungsverwaltung
(www.geodaten.bayern.de)
DWD, Agrarmeteorologie Weihenstephan
BGR: Bük 1.000, 1995
Eigene Berechnungen

